



ITM-C-B21

1/3" Color Camera



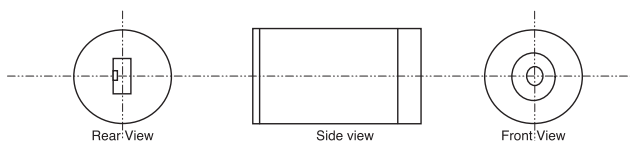
General Description

ITM-C-B21 based on the most advanced CMOS mixed signal technology, integrates image array, signal processing, timing and control circuitry, all on a single chip. Applying a simple circuit and enclosed in a stylish design casing, it becomes a complete camera. It is suitable for low cost application.

Features

- Small size..... Ø 24 x 44 mm
- Full resolution..... 365 k pixels
- Operation voltage 12 V
- Lens..... f 6.0 mm F 1.6
- Built in IR filter
- Low power consumption (< 400 mW)
- 3 pin socket for feasible wiring
- Direct connect to standard video monitor
- Auto exposure control
- Gamma correction..... -0.45/1.0
- Auto gain control -18 dB
- Automatic white balance
- Automatic black level calibration

Illustration Diagramm

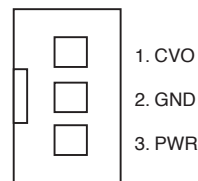


Specification

- Imager CMOS imager sensor OV7910
- Scanning..... 2:1 Interlace
- Shutter..... 1/60 to 1/15,000 sec
- Video Output Composite video (75 Ohms)
- Picture Element..... 628 × 582 pixel
- Effective image area 5.78 mm × 4.19 mm
- S/N Ratio..... > 48 dB (AGC on)
- Resolution 340 TV lines
- Fixed pattern noise..... < 0.03 % Vp-p
- Dark Current < 0.2 nA/cm²
- Dynamic range..... > 72 dB
- Min Illumination 3 Lux at f 1.2 (3000 K)
- Operation Voltage 9 – 12 VDC
- Connectors..... PWR, Video, GND
- Lens..... f 6.0 mm F 1.6
FOV 51° × 43°
- Dimension..... Ø 24 × 44 mm

Features

CVO	Composite Video Output
	Direct connect to TV/Monitor
GND	Common Ground for power and video
PWR	Power Supply 12 V DC



3-pins socket, pitch 2 mm

Accessory

NOTE: Adapter cable and wall mount bracket can be provided as optional accessories. Please check product information ITM-M-B21-KIT or ITM-Z-B1, ITM-Z-B2

