



ITM-M-B21

1/3" Monochrome Camera



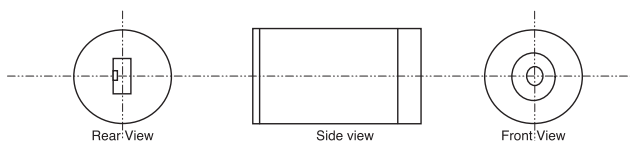
General Description

ITM-M-B21 based on the most advanced CMOS mixed signal technology, integrates image array, signal processing, timing and control circuitry, all on a single chip. Applying a simple circuit and enclosed in a stylish design casing, it becomes a complete camera. It is suitable for low cost application.

Features

- Small size..... Ø 24 x 44 mm
- Full resolution..... 365 k pixels
- Operation voltage 12 V
- Lens..... f 3.7 mm F 2.0
- Built in IR filter
- Low power consumption (< 400 mW)
- 3 pin socket for feasible wiring
- Direct connect to standard video monitor
- Auto exposure control
- Gamma correction..... -0.45/1.0
- Auto gain control -18 dB
- Automatic white balance
- Automatic black level calibration

Illustration Diagramm

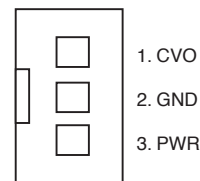


Specification

Imager	CMOS imager sensor OV7411
Scanning.....	2:1 Interlace
Shutter.....	1/60 to 1/15,000 sec
Video Output	Composite video (75 Ohms)
Picture Element.....	628 × 582 pixel
Effective image area	5.78 mm × 4.19 mm
S/N Ratio.....	> 48 dB (AGC on)
Resolution	400 TV lines
Fixed pattern noise.....	< 0.03 % Vp-p
Dark Current	< 0.2 nA/cm ²
Dynamic range.....	> 72 dB
Min Illumination	0.5 Lux at f 1.2
Operation Voltage	9 – 12 VDC
Connectors.....	PWR, Video, GND
Lens.....	f 3.7 mm F 2.0
	FOV 70° × 63°
Dimension.....	Ø 24 × 44 mm

Features

CVO	Composite Video Output
	Direct connect to TV/Monitor
GND	Common Ground for power and video
PWR	Power Supply 12 V DC



3-pins socket, pitch 2 mm

Accessory

NOTE: Adapter cable and wall mount bracket can be provided as optional accessories. Please check product information ITM-M-B21-KIT or ITM-Z-B1, ITM-Z-B2

